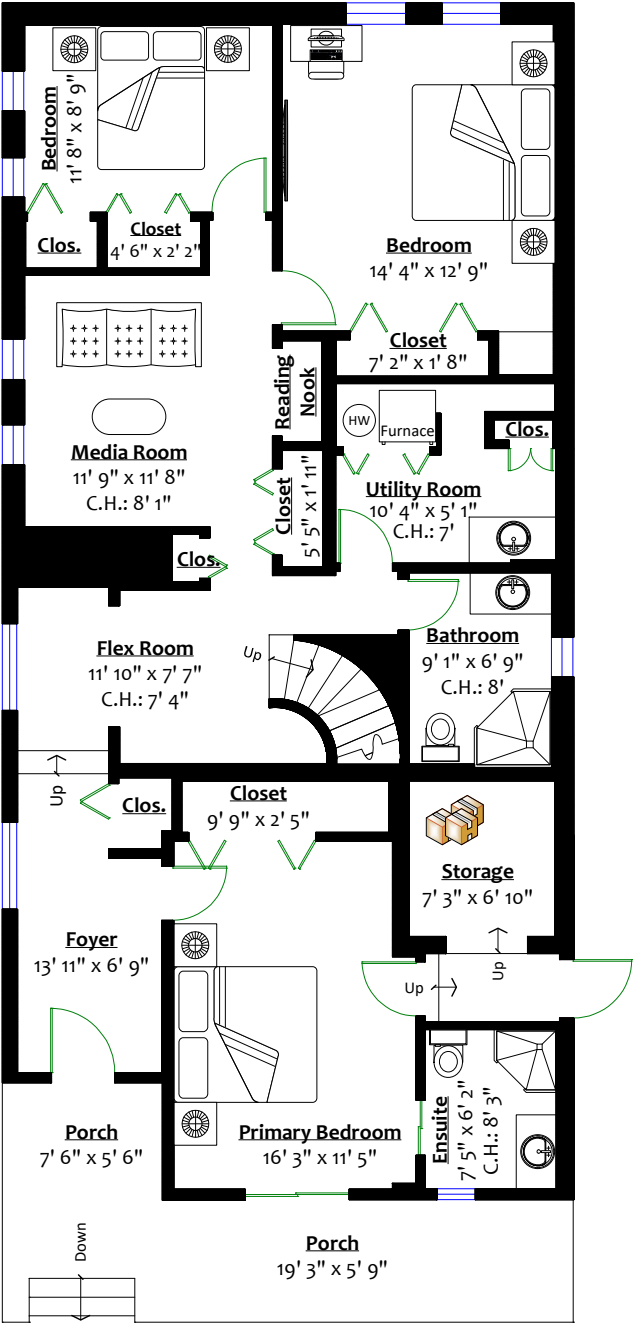


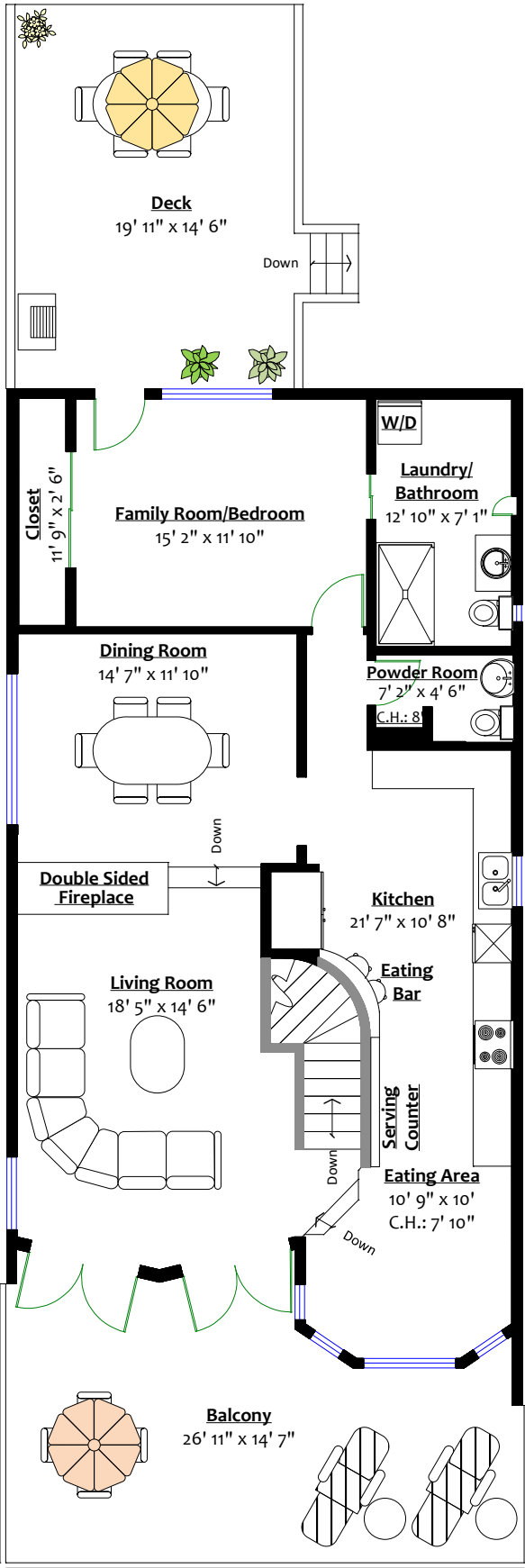
2463 Panorama Drive, North Vancouver, B.C.

Totals**

Main Level:	1,449 sq. ft.	Deck:	307 sq. ft.
Upper Level:	1,270 sq. ft.	Balcony:	369 sq. ft.
		Porch:	183 sq. ft.
Total:	2,719 sq. ft.	Total:	859 sq. ft.



MAIN LEVEL
Floor Area: 1,449 Sq. Ft.
Ceiling Height: 8'



UPPER LEVEL
Floor Area: 1,270 Sq. Ft.
Ceiling Height: 8' 7"



** While all reasonable attempts have been made to ensure accuracy and the square footage and room dimensions are believed to be correct to ANSI Standards, due to the possibility of human error the information cannot be guaranteed. E&O Insured for \$1,000,000