

**390 E Kings Road,
North Vancouver, B.C.**

Totals**

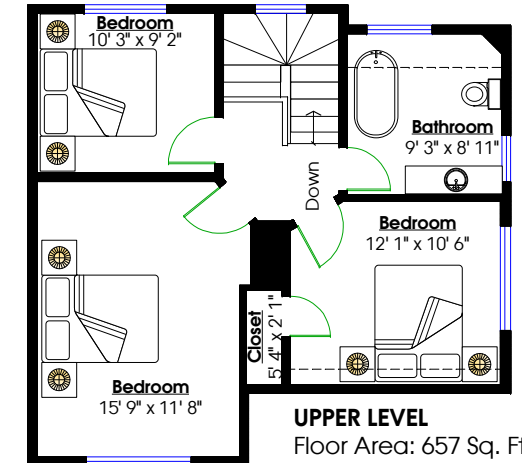
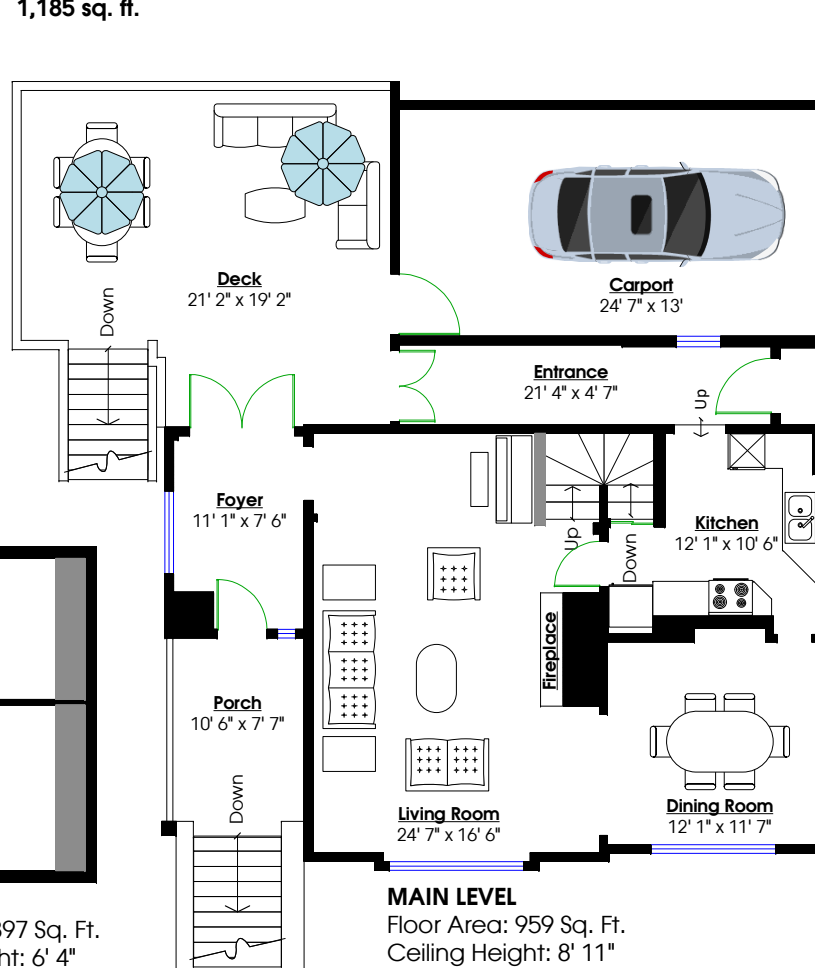
| | |
|--------------------------|-----------------------|
| Main Level: 959 sq. ft. | Carpport: 338 sq. ft. |
| Upper Level: 657 sq. ft. | Deck: 366 sq. ft. |
| Lower Level: 940 sq. ft. | Porch: 84 sq. ft. |
| | Porch: 397 sq. ft. |

Total: 2,556 sq. ft. **Total: 1,185 sq. ft.**

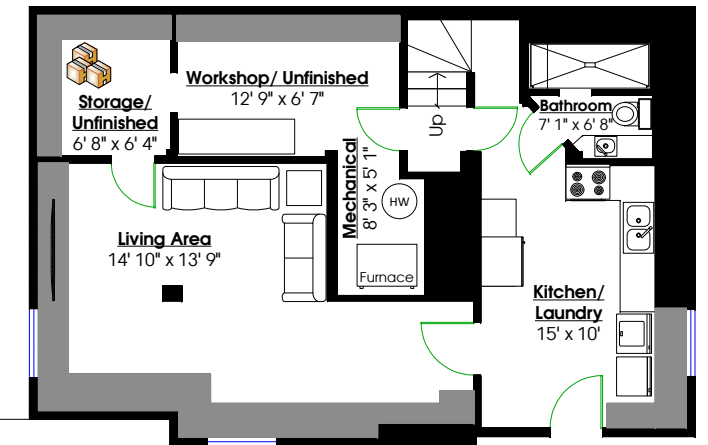


Al Sutton

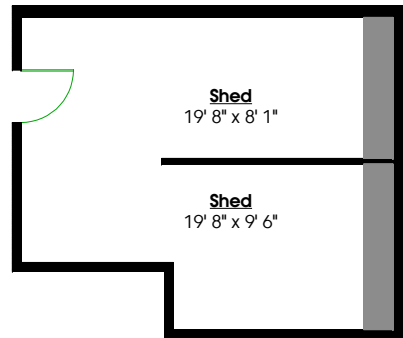
604.984.9711
al@sutton.org



UPPER LEVEL
Floor Area: 657 Sq. Ft.
Ceiling Height: 8' 5"

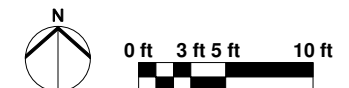


LOWER LEVEL
Floor Area: 940 Sq. Ft.
Ceiling Height: 6' 9"



SHED
Floor Area: 397 Sq. Ft.
Ceiling Height: 6' 4"

MAIN LEVEL
Floor Area: 959 Sq. Ft.
Ceiling Height: 8' 11"



** While all reasonable attempts have been made to ensure accuracy and the square footage and room dimensions are believed to be correct to ANSI Standards, due to the possibility of human error the information cannot be guaranteed. E&O Insured for \$1,000,000