

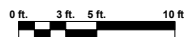
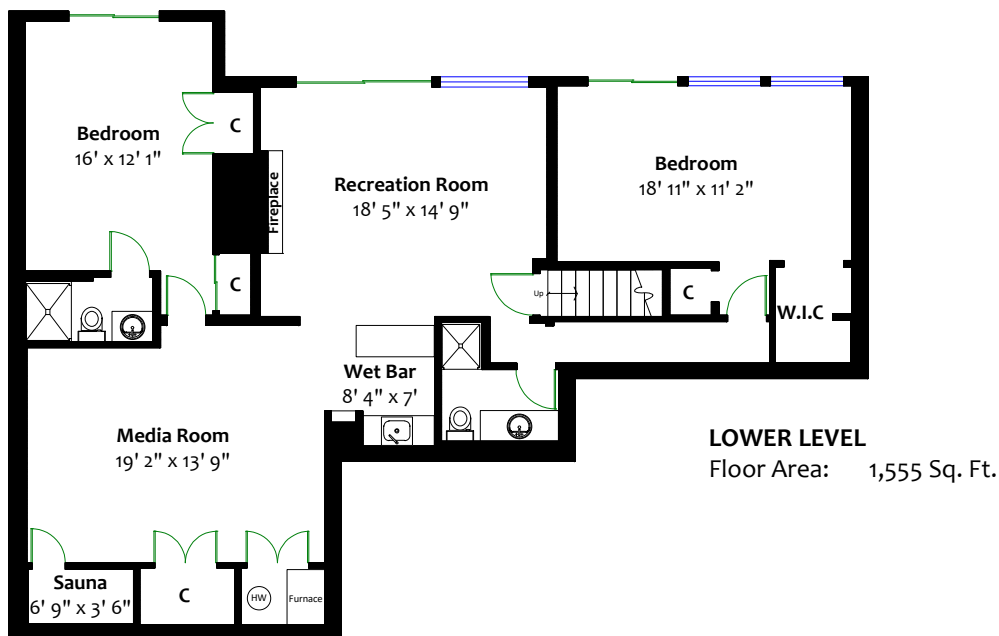
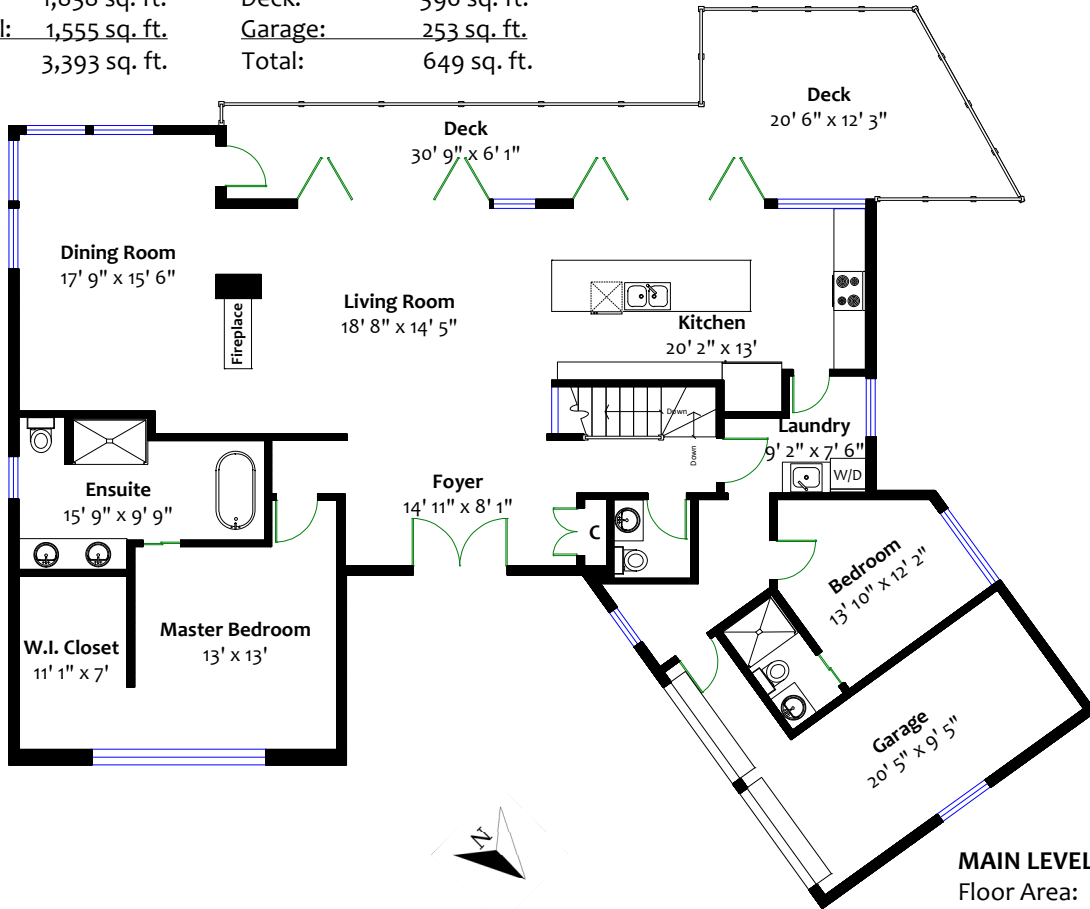
# 4441 Prospect Road, North Vancouver, B.C.

**Al Sutton**  
604.984.9711  
al@alsutton.org



**Totals\*\***

Main Level:	1,838 sq. ft.	Deck:	396 sq. ft.
Lower Level:	1,555 sq. ft.	Garage:	253 sq. ft.
Total:	3,393 sq. ft.	Total:	649 sq. ft.



\*\* Approx. based on interior measurements to exterior walls  
\*\* Total square footage not taken from original blueprints